

Report No.:

Test Time: 11.12.2019 19:01

## Luminaire Property

Luminaire Manufacturer: FAROS LED

Luminaire Category: FG 180 36W 5000K PRISM

Luminous Length (mm): 1200

Luminous Width (mm): 180

Luminous Height (mm): 35

Voltage: 221.4 V

Current: 0.168 A

Power: 36.14 W

Power Factor: 0.969

## Photometric Results

CIE Class: Direct

Measurement Flux: 4055.2 lm

Downward Ratio: 99%

Total Rated Lamp Lumens: 4055.2 lm

Efficiency: 100%

Upward Ratio: 1%

Field Angle(C0/C180,C90/C270,C45/C225,C135/315): 157.2, 158.8, 149.1, 149.1

Beam Angle(C0/C180,C90/C270,C45/C225,C135/315): 80.8, 81.7, 77.2, 77.1

Luminaire Efficacy Rating (LER): 112.26

Central Intensity: 2036.31 cd

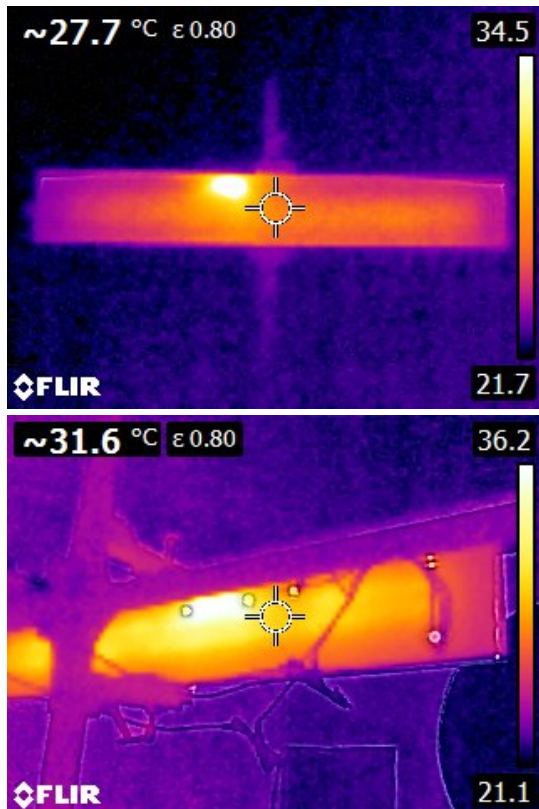
Max. Intensity: 2047.39 cd

Pos of Max. Intensity: H135 V3

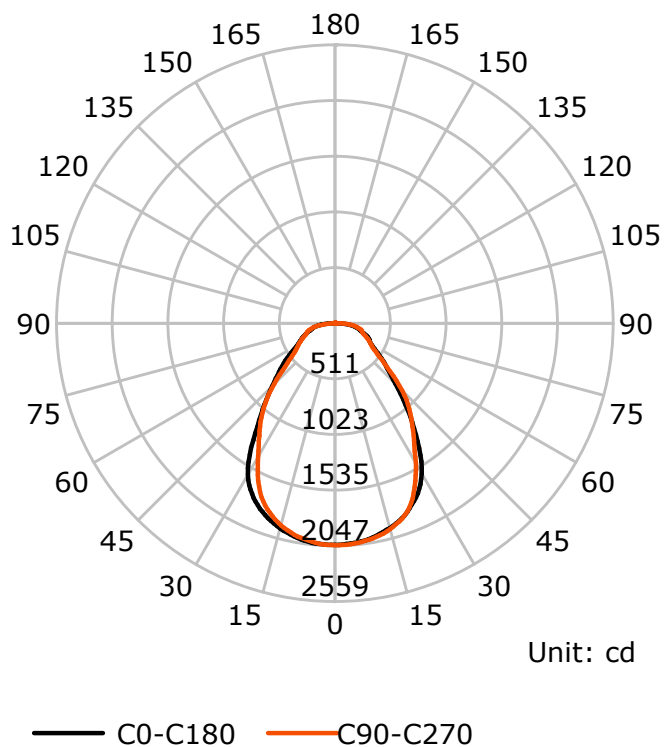
S/MH(C0/C180): 1.17

S/MH(C90/C270): 1.10

Termogramma



Luminous Intensity Distribution Curve



C Plane (°):0.0-360.0: 22.5

Test Lab: FAROS LED Lab

Test Type: TYPE C

Temperature:

Operator: Lab

Gamma Plane (°):0.0-180.0:1.0

Test Device: LSG-1800B

Distance: 12.677 m

Humidity:

Inspector: