

Report No.:

Test Time: 15.09.2021 13:01

Luminaire Property

Luminaire Manufacturer: FAROS LED

Luminaire Category: FP 150 75W 5000K PI150x55

Luminous Length (mm): 504

Luminous Width (mm): 153

Luminous Height (mm): 80

Voltage: 221.4 V

Current: 0.344 A

Power: 75.66 W

Power Factor: 0.992

Photometric Results

CIE Class: Direct

Measurement Flux: 9300.5 lm

Downward Ratio: 99%

Total Rated Lamp Lumens: 9300.5 lm

Efficiency: 100%

Upward Ratio: 1%

Field Angle(C0/C180,C90/C270,C45/C225,C135/315): 114.0, 151.5, 135.9, 135.9

Beam Angle(C0/C180,C90/C270,C45/C225,C135/315): 51.6, 141.9, 64.2, 63.7

Luminaire Efficacy Rating (LER): 122.98

Central Intensity: 1798.7 cd

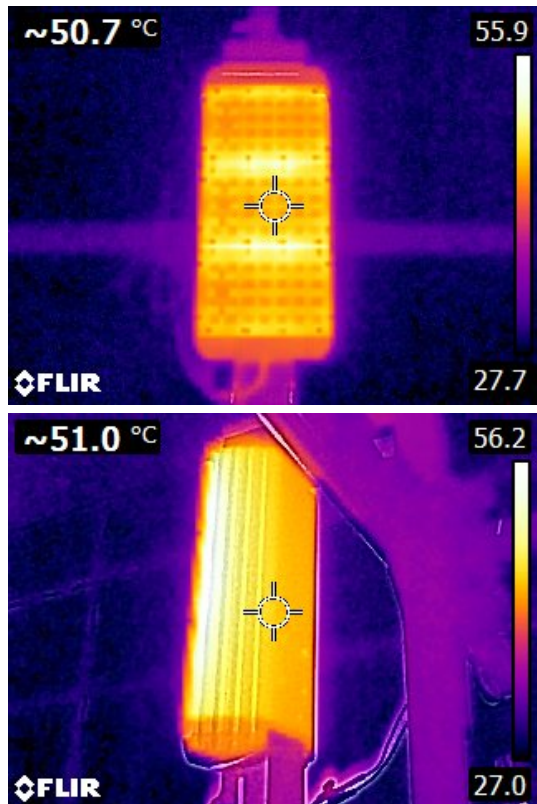
Max. Intensity: 6697.23 cd

Pos of Max. Intensity: H247.5 V60

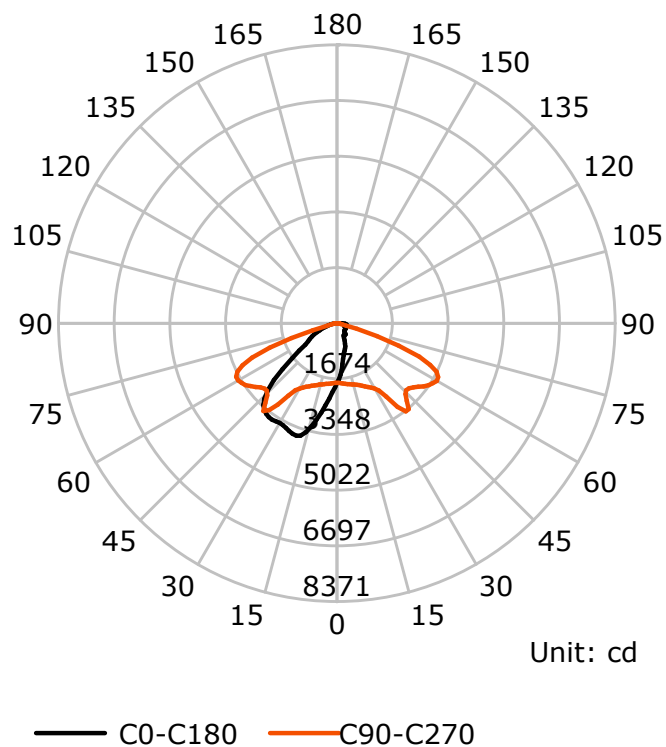
S/MH(C0/C180): 1.62

S/MH(C90/C270): 2.19

Termogramma



Luminous Intensity Distribution Curve



C Plane (°):0.0-360.0: 22.5

Test Lab: FAROS LED Lab

Test Type: TYPE C

Temperature:

Operator: Lab

Gamma Plane (°):0.0-180.0:2.0

Test Device: LSG-1800B

Distance: 12.735 m

Humidity:

Inspector:

Lightsource Test Report

Product Information

Product Type: FP 150 75W 5000K PI150x55

Manufacturer: FAROS LED

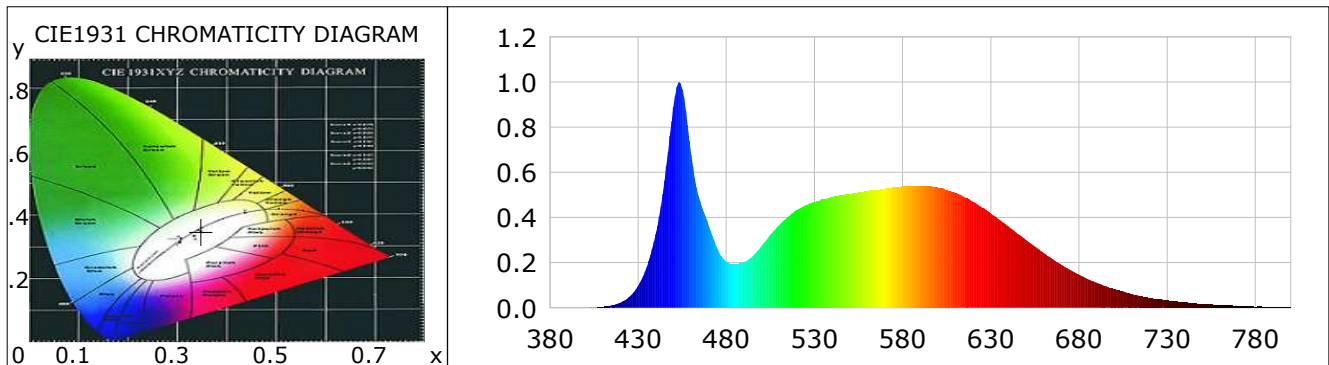
CIE Colorimetric Parameters

Chromaticity coordinates: $x=0.3478$ $y=0.3482$ $u(u')=0.2146$ $v=0.3223$ $v'=0.4834$
 CCT: $T_c=4884K$ ($duv=-0.00282$) Color Ratio: $R=0.168$ $G=0.788$ $B=0.044$
 Peak Wavelength: 453.3nm Half Bandwidth: 20.2nm
 Dominant Wavelength: 577.7nm Color Purity: 0.088
 CRI: $R_a=85.6$, $avgR(1\sim14)=79.4$, $avgR(1\sim15)=79.6$ TM30: $R_f=83$, $R_g=96$
 GAI: $GAI_BB_8=96.0$, $GAI_BB_15=102.6$, $GAI_EES=86.4$

R1 =86	R2 =91	R3 =91	R4 =85	R5 =84	R6 =84	R7 =89	R8 =75
R9 =31	R10=75	R11=83	R12=56	R13=87	R14=95	R15=83	

Color Quality Scale: $Q_a=82.6$, $Q_f=82.2$, $Q_p=83.9$, $Q_g=94.7$

Q1 =87	Q2 =99	Q3 =75	Q4 =70	Q5 =78	Q6 =82	Q7 =87	Q8 =91
Q9 =95	Q10=87	Q11=83	Q12=83	Q13=85	Q14=78	Q15=82	



Photometric Parameters

Luminous Flux:
EEI: 0.00

Efficiency: 0.00 lm/W

Radiant Power: 30.918 W

Energy Efficiency Class: A++ (EU 874-2012)

Electric Parameters

Voltage: 0.0000V
Power Factor: 0.0000

Current: 0.0000A
Frequency: 0.00Hz

Power: 0.00W

Test Information

Scan Range: 380~800:1nm
 Stabilization Time: 0 ms ALC.: 1.0000
 Max of Signal: 45525 (3140)

Photometric Method: sphere-spectroradiometer
 Photometric Condition: Sphere diameter: 1.00m, 4PI
 CCD Integration Time: 52.75 ms

Lightsource Test Report

Product Information

Product Type: FP 150 75W 5000K PI150x55

Manufacturer: FAROS LED

WL(nm)	PL	PE(mW/nm)	WL(nm)	PL	PE(mW/nm)	WL(nm)	PL	PE(mW/nm)
380	0.0004	0.1118	525	0.4543	127.1442	670	0.1914	53.5708
385	0.0007	0.1868	530	0.4690	131.2519	675	0.1686	47.1793
390	0.0006	0.1811	535	0.4815	134.7702	680	0.1476	41.2977
395	0.0006	0.1690	540	0.4899	137.1285	685	0.1276	35.7263
400	0.0009	0.2490	545	0.4986	139.5485	690	0.1114	31.1915
405	0.0020	0.5693	550	0.5061	141.6528	695	0.0969	27.1306
410	0.0054	1.5064	555	0.5109	142.9974	700	0.0830	23.2319
415	0.0114	3.2030	560	0.5166	144.5929	705	0.0724	20.2764
420	0.0232	6.5044	565	0.5231	146.4063	710	0.0618	17.2964
425	0.0484	13.5499	570	0.5277	147.7032	715	0.0521	14.5865
430	0.0966	27.0366	575	0.5336	149.3496	720	0.0446	12.4796
435	0.1843	51.5778	580	0.5367	150.2134	725	0.0383	10.7093
440	0.3281	91.8395	585	0.5391	150.8826	730	0.0331	9.2523
445	0.5659	158.3818	590	0.5405	151.2687	735	0.0281	7.8782
450	0.8902	249.1486	595	0.5392	150.9106	740	0.0236	6.6056
455	0.9701	271.5248	600	0.5328	149.1140	745	0.0203	5.6866
460	0.6814	190.7166	605	0.5232	146.4376	750	0.0183	5.1202
465	0.4741	132.6953	610	0.5092	142.5044	755	0.0150	4.2015
470	0.3652	102.2187	615	0.4909	137.3939	760	0.0123	3.4476
475	0.2618	73.2722	620	0.4702	131.6091	765	0.0108	3.0237
480	0.2043	57.1708	625	0.4449	124.5197	770	0.0090	2.5224
485	0.1943	54.3934	630	0.4184	117.0984	775	0.0072	2.0110
490	0.2035	56.9470	635	0.3897	109.0778	780	0.0056	1.5564
495	0.2297	64.2966	640	0.3611	101.0605	785	0.0054	1.5141
500	0.2749	76.9407	645	0.3300	92.3751	790	0.0045	1.2687
505	0.3235	90.5460	650	0.3003	84.0547	795	0.0044	1.2422
510	0.3663	102.5301	655	0.2714	75.9511	800	0.0029	0.7983
515	0.4034	112.8993	660	0.2437	68.2168			
520	0.4348	121.6874	665	0.2158	60.3892			

Condition: Tx:26.5'C, Ti:0.0'C, R.H.:60%
Test Lab: FAROS LED Lab
Operator: Lab

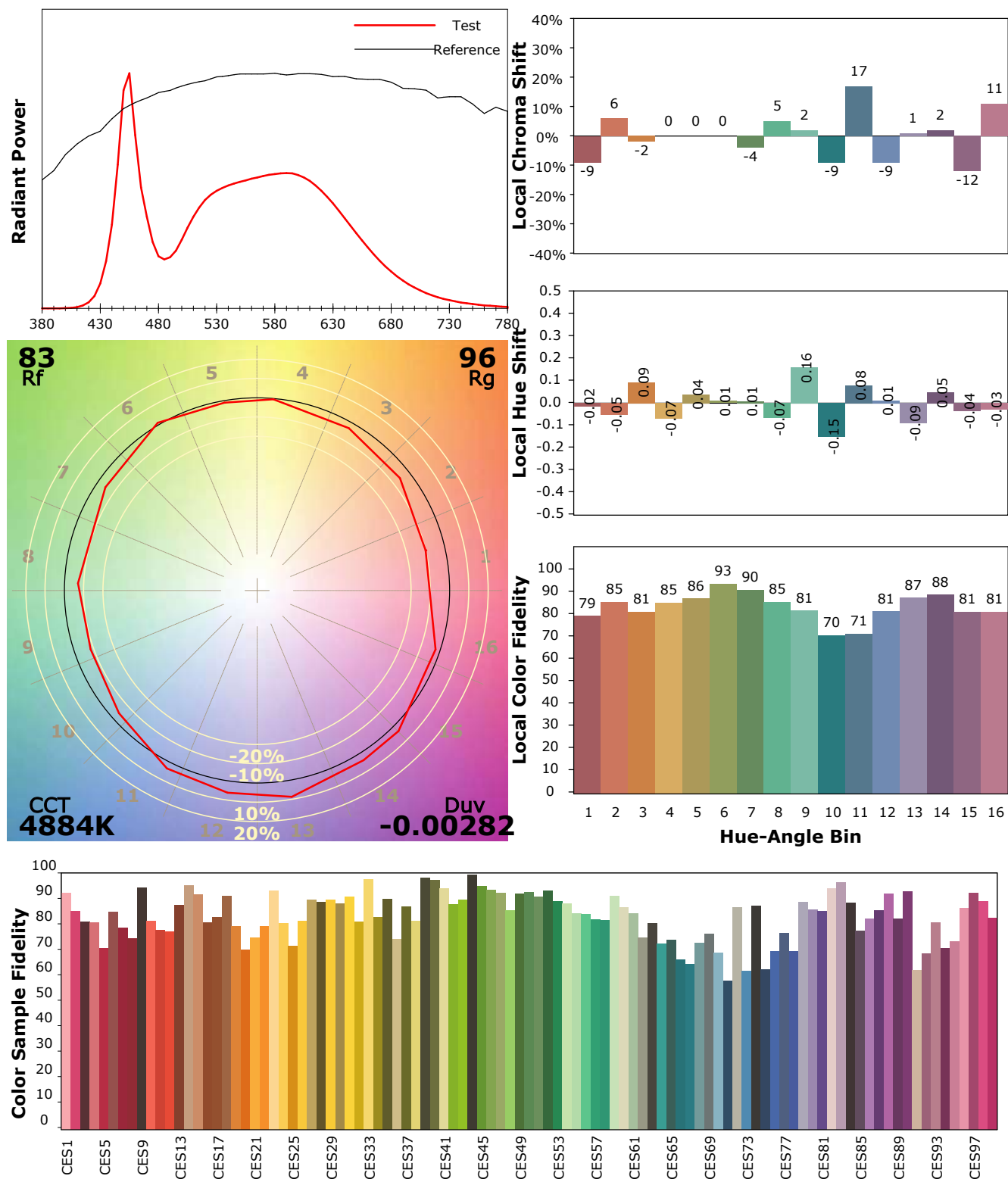
Test Device: Lisun LMS-9000A(Plus)
Test Time: 2021-09-15 13:32:31
Inspector:

IES TM-30-18 Color Rendition Report

Product Information

Product Type: FP 150 75W 5000K PI150x55

Manufacturer: FAROS LED



Condition: Tx:26.5°C, Ti:0.0°C, R.H.:60%

Test Lab: FAROS LED Lab

Operator: Lab

Test Device: Lisun LMS-9000A(Plus)

Test Time: 2021-09-15 13:32:31

Inspector: